

A map of New Jersey showing its 21 counties, each color-coded and labeled. The counties shown are Sussex, Passaic, Bergen, Warren, Morris, Essex, Hudson, Somerset, Union, Mercer, Middlesex, Monmouth, Burlington, Ocean, Cumberland, Atlantic, and Cape May. The text "NJ Stroke Coordinator Consortium (NJSCC)" is overlaid in large, bold, black font across the center of the map.

NJ Stroke Coordinator Consortium (NJSCC)

Dana Reiner APN-C, MSN, RN, CNRN

Presenter Disclosure Information

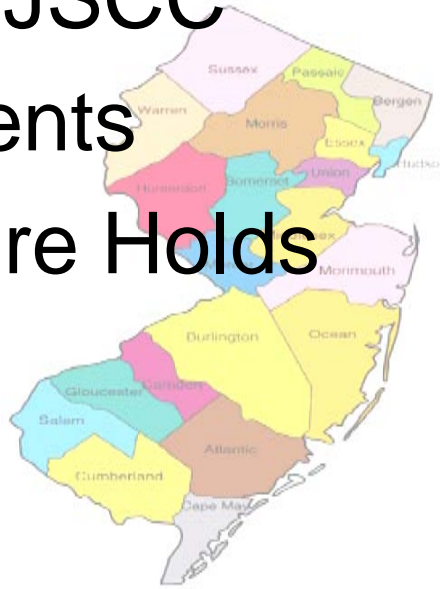
Dana Reiner

- FINANCIAL DISCLOSURE:
- None
- UNLABELED/UNAPPROVED USES DISCLOSURE:
- None



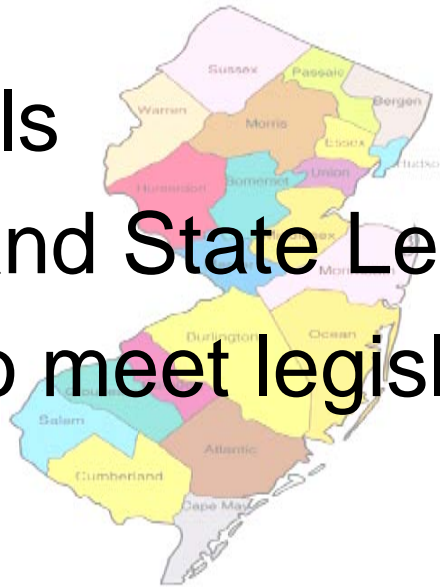
Today's Objectives

- Overview of NJSCC
- Accomplishments
- What the Future Holds



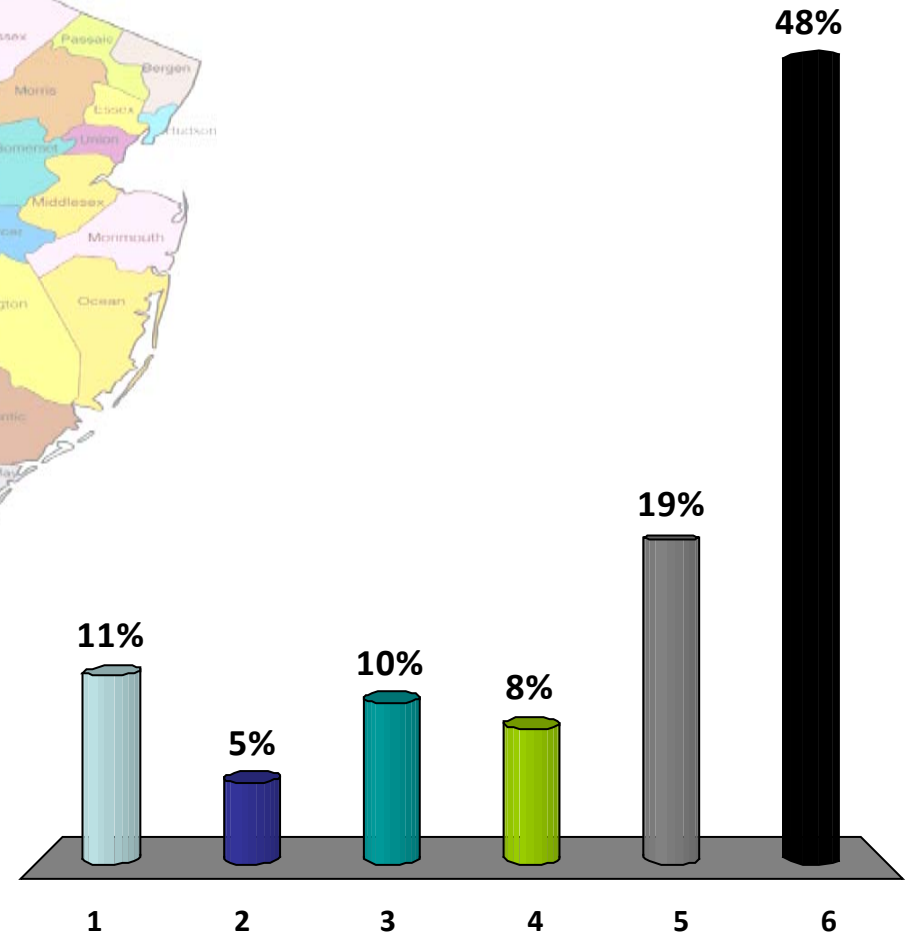
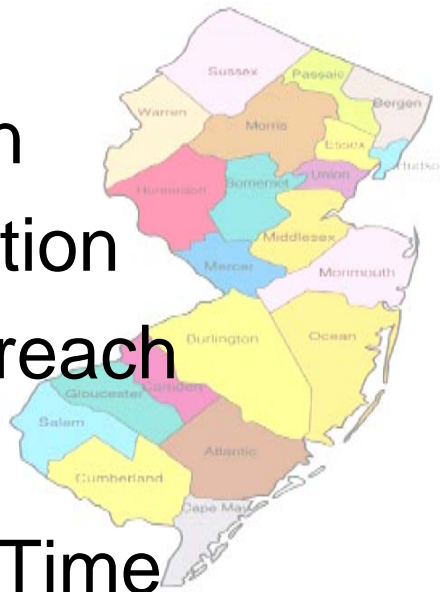
Where We Began

- 2008 NJSCC
- 40-60 Hospitals
- Stroke in NJ and State Legislature
- Share ideas to meet legislative requirements



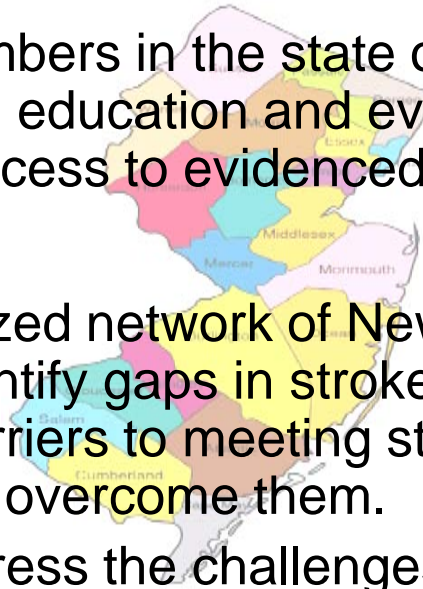
What is the most challenging thing you have experienced as a stroke coordinator?

1. Data Abstraction
2. Quality Compilation
3. Community Outreach
4. Staff Education
5. Door to Needle Time
6. All of the Above



Vision and Mission

- Vision
 - All community members in the state of NJ will be offered stroke risk and prevention education and every stroke patient in New Jersey will have access to evidenced- based quality patient care.
- Mission
 - Develop an organized network of New Jersey stroke program coordinators to identify gaps in stroke education in the community and barriers to meeting stroke patient care goals and share strategies to overcome them.
 - Collaborate to address the challenges in implementing best practices among New Jersey stroke centers with a focus on translating knowledge into practice through information exchange and empowered action.

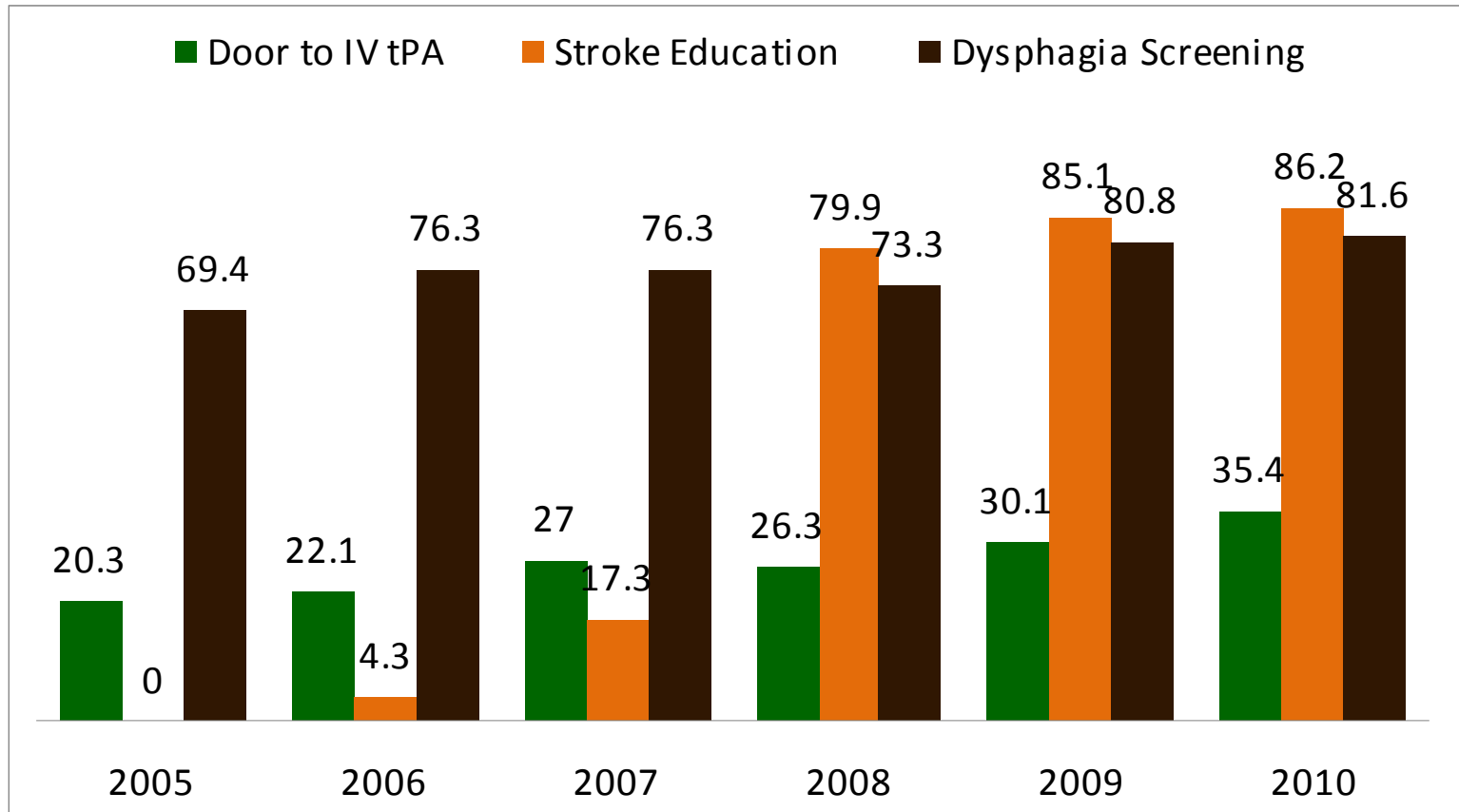


Meeting Overview

- Journal Club
- Data Registry
- Work Groups
 - Staff Education
 - Community Outreach
- Sub Task Force Committees



Accomplishments



Accomplishments

Stroke Data - 2011

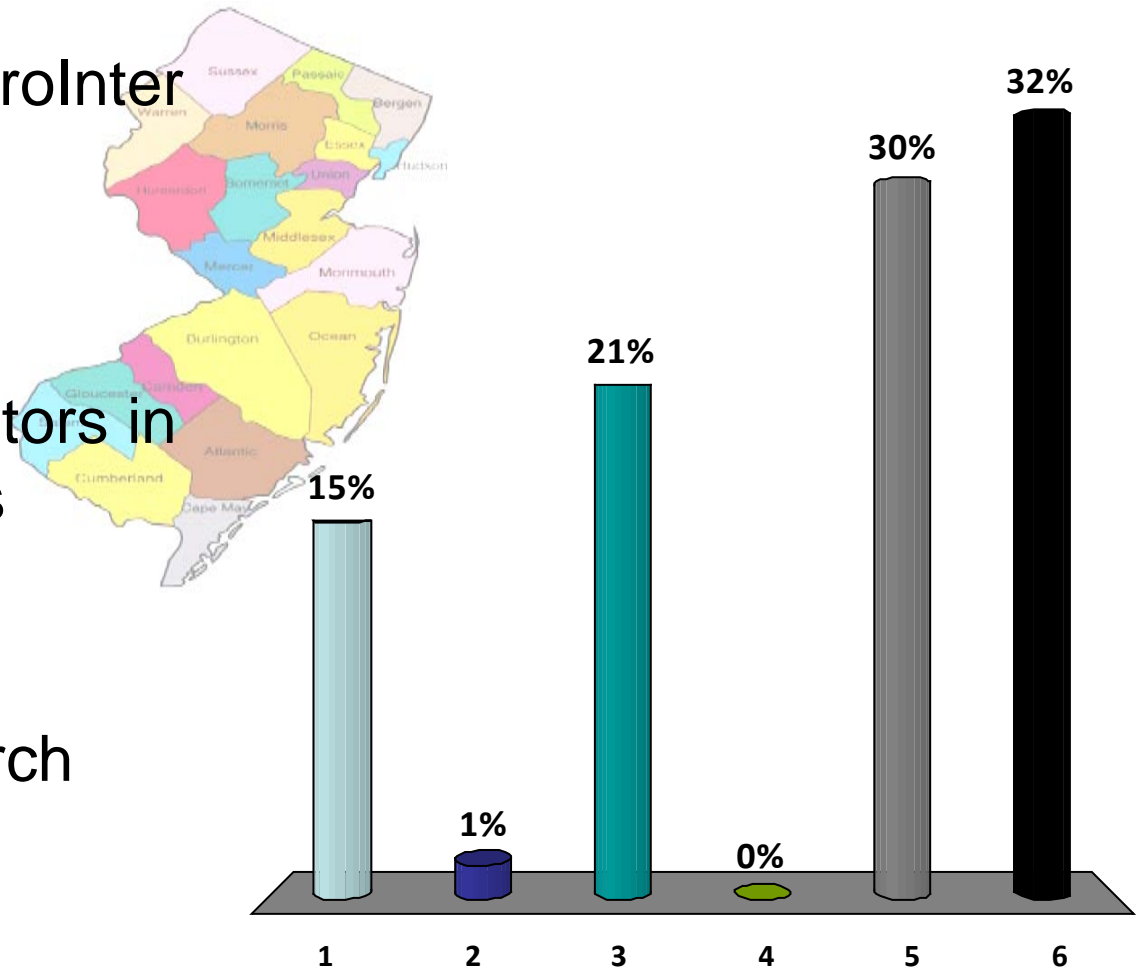
Year	Door to IV tPA Mean	Stroke Education Mean	Dysphagia Screening Mean
2005	20.30	.00	69.40
2006	22.10	4.30	76.30
2007	27.00	17.30	76.30
2008	26.30	79.90	73.30
2009	30.10	85.10	80.80
2010	35.40	86.20	81.60

For each individual Stroke indicator, there are statistically significant differences in the scores among the six years

Stroke Data: One-Sample T-Test						
Test Value = 0						
				95% Confidence Interval of the Difference		
	t	df	Sig. (2-tailed)	Mean Difference	Lower	Upper
Door to IV tPA	12.037	5	.000	26.86667	21.1292	32.6042
Stroke Education	2.629	5	.047	45.46667	1.0148	89.9185
Dysphagia Screening	40.785	5	.000	76.28333	71.4754	81.0913

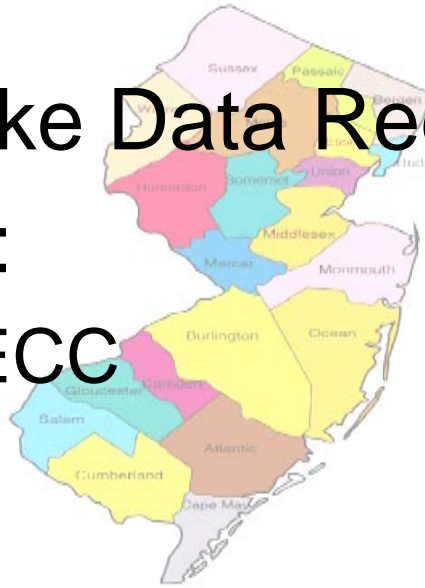
Who do you go to when you have questions regarding stroke care standards?

1. Neurologist/NeuroInterventionalist
2. Collaborating Physician
3. Stroke Coordinators in other institutions
4. Primary Care Physician
5. Journals/Research
6. All of the Above



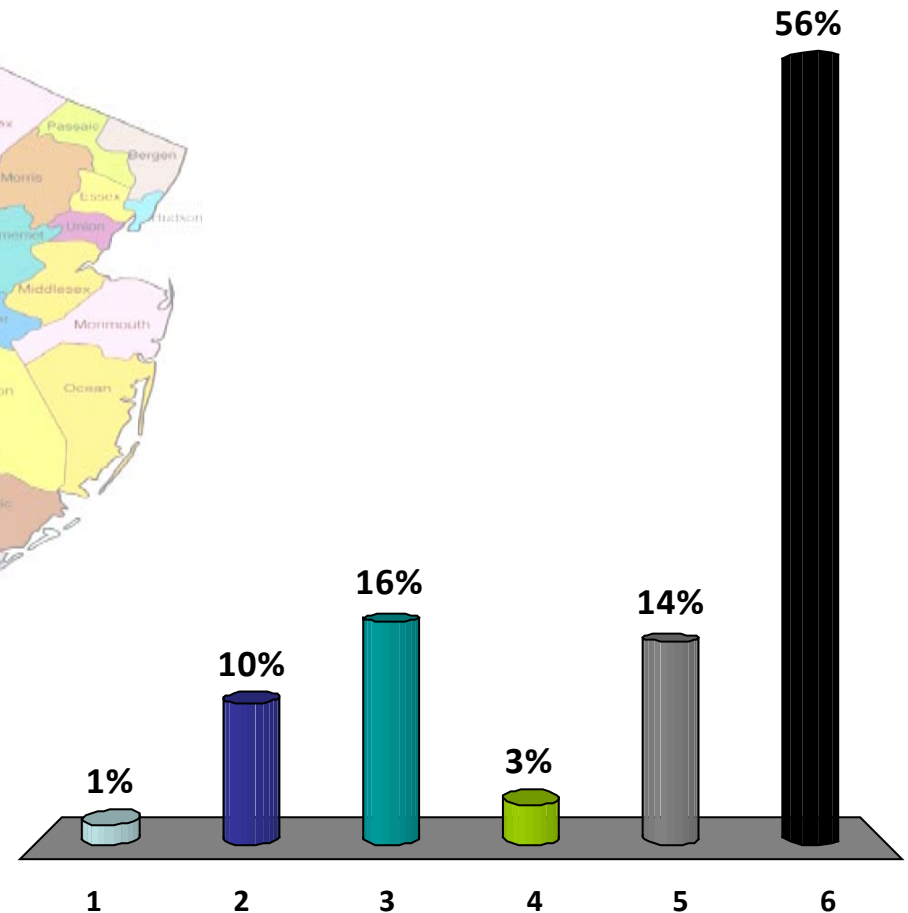
Other Accomplishments

- NJSCC Inc.
- NJ Acute Stroke Data Registry
- Presentations:
 - Posters at NECC
 - Poster at ISC



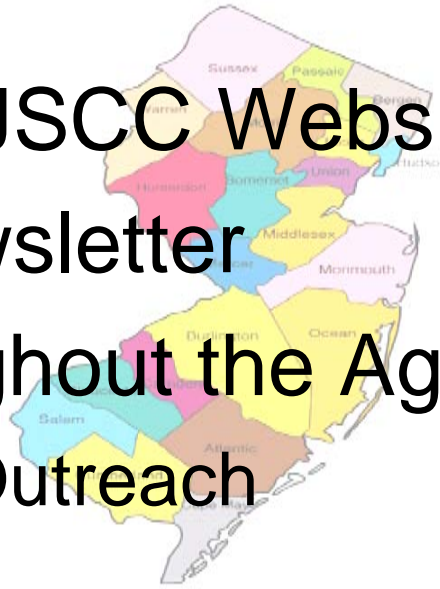
Where do you focus your community education?

1. Local Schools
2. Local Subacute/Long Term Care Facilities
3. Local Organizations
4. Local Workforces (police/fire/corporations/business)
5. Internal to institution
6. All of the Above



Future Goals

- 501(3) C
- Creation of NJSCC Website
- Quarterly Newsletter
- Stroke Throughout the Ages
 - Community Outreach
- CNE Provider



October 29th is World Stroke Day!



Stroke can happen to anybody at any time! Learn to recognize signs of stroke and act FAST! Call 911 and say "Stroke" to the dispatcher. Please share with someone today!